

Weekly Update 15

Saturday 21 January 2023

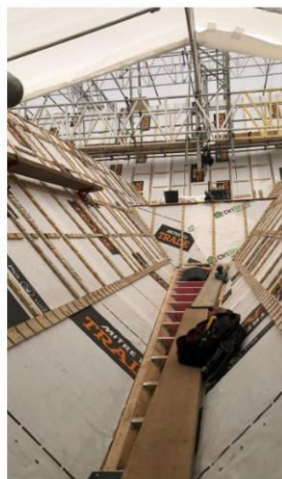


Fig. 1 Bell tower reinforcement

Fig. 2 East wing internal gutter

Fig. 3 East main roof from bell tower

Papering over the cracks

The roof job continues at pace with the building “paper” (which is actually a moisture-proof fabric) now laid on the whole of the east side of the church roof sub-structure. Notched battens are being screwed on top ready for the plywood tile underlay to be screwed to the battens. Everything has to be stainless steel screwed to connect the plywood to the rafter structure below. The notches will allow airflow to ventilate the cavity between the plywood and the building paper.

Above in Figure 1 you can see some of the strengthening of the bell tower, which is awaiting the building inspector’s approval before closing the building paper, fixing the battens, plywood, and finally the replacement timber shingles. The resident white-tailed spider succumbed when the old shingles were dismantled.

In Figure 2 you can see some of the framing for the rebuilt internal gutter. Figure 3 provides a view of the east side of the main roof from under the bell tower scaffold landing.

The need to wait on the building inspector to sight and approve the work and labour scheduling constraints have pushed the roofer’s start date out from 24 January to the beginning of February.

Steve Barnett, Project Lead